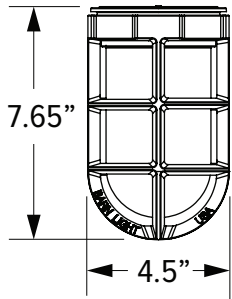


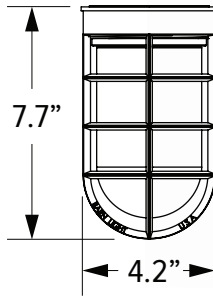


Different accessories completely alter the look and feel of a light. By selecting a durable cast guard and glass or a rugged wire cage, our lights take on a trendy industrial character. Not only are these accessories stylish, but they also protect the bulb in commercial or industrial settings!

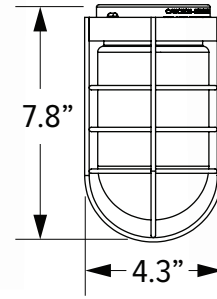
GUARD OPTIONS



TGG Heavy Duty Cast Guard



CGG Standard Cast Guard



WGG Wire Guard



GLASS OPTIONS

Not Applicable with Halogen Lights



CLR
Clear



FST
Frosted



RIB
Ribbed



BLU
Blue



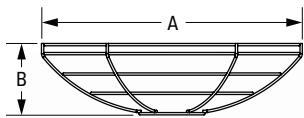
GRN
Green



AMB
Amber

WIRE CAGE

Not Applicable with Guard and Glass or Select Shade Styles

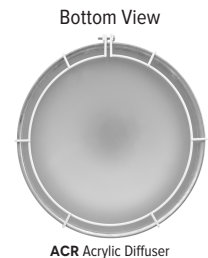


WC Wire Cage

DIAMETER (A)	HEIGHT (B)
8"	2.7"
10"	2.9"
11"	3.2"
12"	3.4"
13"	3.7"
14"	3.9"
15"	4.2"
16"	4.4"
17"	4.7"
18"	4.9"
20"	5"

ACRYLIC DIFFUSER

Not Applicable with Guard and Glass, GU24 Sockets, or Select Shade Styles



*Please contact Barn Light Electric with any questions regarding applicable shade sizes and light sources.